

PROFILE OF SHUSHILAN



An Organization for Development of Eco-sensitive
and Vulnerable Community

Shushilan is a **Bengali** name means good practice for a better future, is a Non Government Development Organization established in 1991. A group of enlightened youth of village Benadona, Kaliganj Upazila, Satkhira organized it. The Organizational main agenda are – Socio Economic Development, Private Sectors Engagement, resettlement, Sustainable Environmental Resource Management, Disaster Risk Management, Adaptation to Climate Change, Education & ICT, Health & Nutrition, WaSH, Secure Livelihoods, Human Rights & Good Governance, Sustainable Peoples’ Organization and Gender-Equity for the vulnerable community.

Legal Status:

D/S/W Reg. # Satkhira/94/91 Dated: 09/10/1991

NGO Affairs Bureau Reg. # 768 Dated: 01/11/1993

Bangladesh Bank (MR) Reg.# 00345-00075-00038 Dated: 09/09/ 2007

Fundamental Philosophy:

Human potential is infinite. The point is to explore its multi-dimensional manifestations and harness it to promote human welfare.

Basic Principle:

- Equity and neutrality
- Upholding national interest
- Safe-guarding the interest of the backward, socially disadvantaged and Hard Core Poor (HCP) community
- Democratic culture, transparency and accountability
- Ensuring a secure home land for future generation

Vision

A congenial society for economic and socio-cultural development of the poor and vulnerable community.

Mission

Create opportunities and enable the society especially underprivileged/socially excluded community for Sustainable Environmental Resource Management, Disaster Risk management, Adaptation to Climate Change, Education, ICT, Health, Nutrition, Secure Livelihoods, Human Rights & Good Governance and Gender-Equity.

Strategic Priority:

The seven strategic priorities have been identified for **Shushilan** future direction are:

1. Improve livelihoods of rural and urban people with special attention to coastal, riverbank, wetlands and hill-tracts.
2. Improve education and health & nutrition condition of vulnerable people.
3. Climate Change and Disaster Management
4. Focus on human rights and good governance
5. Sustainable environmental resources management especially in eco-sensitive areas
6. Value chain and market linkage development
7. Develop people’s organization and leadership

8. Use and promotion of Information & Communications Technology (ICT)

Cross-cutting Issues:

- Gender & Equality
- HIV and AIDS
- Value for money
- Transparency and Accountability
- Sustainability

Implementation Methods:

- Democratic
- Participatory

Development Approach:

- Grassroots democratization
- Right Based Approach
- Empowering Approach
- Networking and Partnership Approach
- Decentralization Approach
- Farming System Approach
- Community Based Resource Management
- Indigenous Knowledge Based Development
- Sustainable Development Approach

Development Partners of Shushilan

- **Climate Change Induced Affected Communities**
- **Disaster Induced Affected Communities**
- **Distressed Women (Divorced, Widow, Shrimp Fries Collectors, Derelict Women, Women Headed Family)**
- **Marginal And Landless Farmers**
- **Honey Collector, Wood Collector, Fishing Communities (Shundarbans Dependent)**
- **Person with Disability (PwD)**
- **Untouched Community**
- **Excluded communities**
- **Youth Society and Adolescent**
- **Women and Children**
- **Civil Society**
- **Research Institute And Universities**
- **Locally Elected Legislative Body, Club, NGOs**
- **Various Sectors of Government**
- **Donor Agencies**

Mobilization of Social Capital:

Membership:

ECOSOC – UN (Consultative Status of NGO Branch), IUCN, WaSH Cluster, Shelter Cluster, Food Cluster, Health & Nutrition Cluster, EWP, FANSA, ADAB, CDF, ALRD, Shifting The Power, Child Rights Forum and CAMPe

Partnership:

- Government Agencies: BWDB, DoF, DAE, DoL, DPHE, LGED, CDMP, DGFP, DoE, MoL, LGD, RDCD, WAB, ICTD
- INOGs: Concern Worldwide, CARE, WaterAid, Oxfam, Christian Aid, Action Aid BD, Marie Stopes, Save The Children International, Action Contre La Faim (ACF), World Fish, IWMI, EngenderHealth-BD, Helvetas
- UN: WFP, UNDP, UNICEF, WHO, UNFPA, ILO, FAO
- Private Sector: Grameen Phone, ISPAHANI, Rahimafroz

Linkage:

Linkages with IRRI, IWMI, WFC, BFRI, BRRI, BARI, BINA, SRDI, Dhaka University, Agricultural University, Khulna University and Chittagong University

Network Organized by Shushilan as lead Organization:

Oitijhya: A local NGOs Network of greater Khulna

Shadhikar: Women UP Members Network

Oikytan: A local clubs/CBOs network of Shyamnagor & Kaliganj Upazilas in Satkhira

Human Resource:

Shushilan has 1233 staffs with different background – Environmental Science, Health, & Sanitation, Agriculture, Fisheries, Social Science, Development Studies, Engineering & Technology, Law, Finance and Administration.

Type of staff	Male	Female	Total
Full time	444	202	646
Volunteer	02	585	587
Total	446	787	1233

Donors:

Current Donors	Past Donors
ADB, Concern Worldwide - EU/Charity Water, CDMP, Christian Aid, Oxfam, UNDP, UNICEF, WFP-LGED/Unilever, WaterAid, WHO, Action Contre La Faim (ACF), Bangladesh Bank, EEP/shiree-Ukaid-SDC, SDC-Helvetas, MaX Foundation, RDA, BEPZA- World Bank, HYSAWA, BAURES, IWMI, BRITISH COUNCIL, KNCF-Japan, Action Aid Bangladesh, Department of Women Affairs (DWA), International Labor organization (ILO), Dhaka University/Unicef, Engender Health, NGO Foundation, ICT Division of GoB, Embassy of the kingdom of Netherland- EKN, JICA & CDA, World Fish Center, Inclusive Home Solution, Bangladesh Fisheries Research Institute	ACDI/VOCA-USAID, Tetra Tech ARD-USAID, DANIDA, BRAC, IRRI, APHD-Hong Kong, ASIRP, Bangladesh Freedom Foundation (BFF), British High Commission, BDPC/MESERIOR, BWDB/WFP, Canada Fund, DNFPE-Govt. of Bangladesh, Global Plant Health Clinic, NGO Forum, DOF/DFID, Department of Forest/WFP, IRRI/PETRRRA, IVS, Ministry of Labour & Manpower. SMF(Stromme Memorial Foundation), Stichting Overal Manitese-Italy,

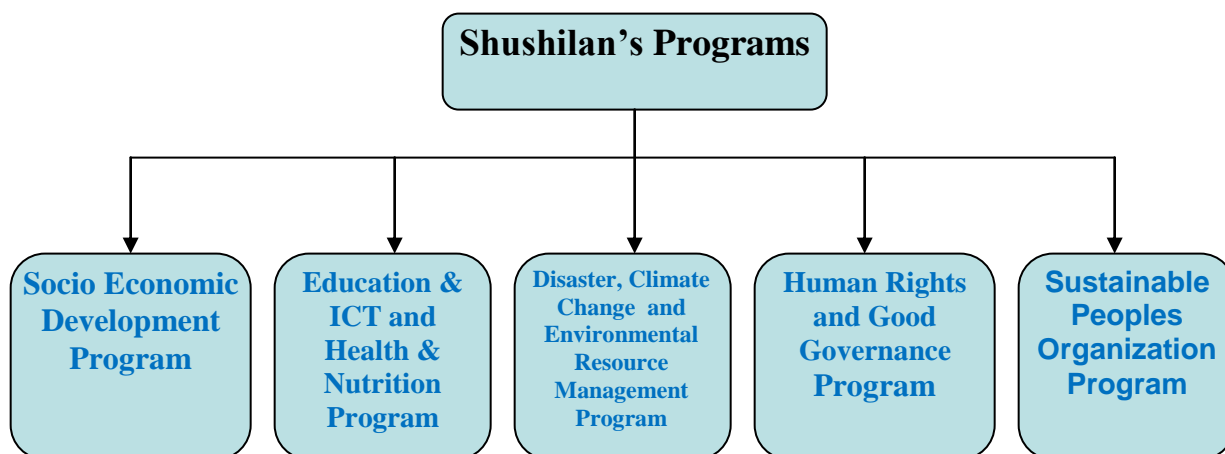
(BRFI), Khulna WASA	WFP/LGED,
---------------------	-----------

Working Area:

SI No	Division	District	Number of Upazila	Number of Union
01	Khulna	Satkhira	07	78
		Khulna	10	68
		Bagerhat	06	27
		Jessore	02	17
		Narail	03	37
02	Barisal	Barguna	06	32
		Pirojpur	03	06
		Bhola	07	61
		Patuakhali	04	16
		Jhalokati	04	04
03	Rajshahi	Rajshahi	07	11
		Naogoan	07	09
		Sirajgoanj	01	01
04	Rangpur	Rangpur	08	79
		Gaibandha	07	72
		Nilphamari	05	18
		Kurigram	09	66
		Lalmonirhat	05	09
05	Sylhet	Sylhet	09	20
06	Chitagong	Chitagong	02	09
		Comilla	03	34
		Noakhali	06	32
		Cox's Bazer	04	05
		Feni	05	34
		Laxmipur	05	05
		Chadpur	01	01
		Mymensingh	02	22
07	Dhaka	Dhaka	02	02
		Narsingdi	01	01
		Total	138	776



Shushilan's Programs:



1. Socio Economic Development Program:

The main objective of this program is to generate initial capital for the rural poor. The weekly savings of group members and credit disbursed serves as initial capital for micro enterprise development. The activities under this program are as follows:

- Group savings
- Micro credit
- Small-scale Rural Enterprise Development
- Value chain and Market linkage

- Agro-based business promotion
- Support to Person with Disability (PwD)
- Employment generation and linkage with private sector

2. Education & ICT and Health & Nutrition Program:

Education:

- Non-Formal Primary Education
- Functional Education
- School feeding

Information & Communication Technology (ICT):

- Promotion of ICT
- Capacity building on ICT

Health & Nutrition:

- Primary Health Care
- Nutrition for child & mother
- Growth monitoring (Identify SAM & MAM and provide necessary support)
- Nutritious food distribution
- Strengthening health system including community clinic
- Reproductive Health
- Family Planning
- HIV/AIDS

3. Disaster, Climate Change and Sustainable Environmental Resources Management Program

This program involves multi-dimensional activities with specific focus on sustainable agriculture, conservation of biodiversity, mitigation & adaptation to climate change, disaster management and introduction of sustainable agriculture in diverse agro-eco zone especially in saline area.

A. Sustainable Environmental Resources Management:

i. Soil resource management:

a) Homestead gardening

b) Sustainable Agriculture

1. Agriculture Service Centre:

- Vegetables gardening
- HYV rice seed production
- Fish Culture
- Poultry farm & livestock
- IPM
- Soil & water test
- Herbal garden
- Saline tolerant agriculture
- Indigenous knowledge based program
- Technology dissemination
- Information center
- Technology uptake

2. Farmer to farmer dissemination:

- Farmer group
- Demo plot
- Field days
- Provide quality seed
- Linkage development

ii. Water resource management

- Community based water management
 - Surface Water
 - Safe Water
 - Aquaculture
- iii. Environmental Sanitation:
- Sanitation
 - Hygiene promotion
- iv Wetland resource management
- Eco-demo farm
 - Mangrove nursery & plantation
 - Saline tolerant agriculture
 - Crab culture
 - Organic shrimp culture
- v. Forest resource management
- Homestead plantation
 - Roadside plantation
 - Char/Embankment plantation
 - Bio-diversity conservation
 - Bee-keeping
- vi. Wind resource management
- Electricity Generation
- vii. Watershed management and Hydroponics
- viii. Resettlement

B. Disaster management

- Conduct CRA and develop DM plan
- Disaster Risk Reduction (DRR)
- Disaster preparedness
- Disaster response, recovery and rehabilitation

C. Climate Change

- Awareness raising on climate change & its impacts and adaptation measures
- Community Risk & Vulnerability Assessment (CRVA)
- Mitigation measures
- Adaptation to climate change vulnerabilities at grass roots level

4. Human Rights & Good Governance Program:

Ensuring socially disadvantaged, less privileged communities access to justice, common resources and existing socio-political institutions are some of the burning issues constituting *Shushilan's* mainstream agenda on good governance.

i. Strengthening Democratic Institutions:

- Capacity building of UPs /LEBs: *Open budget, activate village court & arbitration council, activate standing committees and enhance tax collection*
- Network for women UP members
- Network of youth clubs and journalists associations
- Sustainable resource management forum

ii. Access to social justice

- ADR
- Court case support

iii. Protection of Women and Child trafficking

iv. Advocacy:

Advocacy focuses on the following issues:

- Khas Land Movement
- Ahammadia's religious rights movement
- Munda Adibashi minorities rights
- Unplanned shrimp farming
- Waterlogged and stop lease out kash pond, canel lake etc

5. Sustainable Peoples Organization Program:

i. Shushilan's capacity building:

- Human Resource development
- Technological Capacity Building
- Resource center development
- Financial sustainability
- Research

ii. Capacity Building of Development Partners:

A. Training:

1. Human resource development training
2. Skill development training

B. Mass awareness:

Cultural Program (Picture Drama, Jari, Gomvira etc), Rally, Day observation, Workshop, Seminar, Dialogue, Poster, Leaflet, Booklet, Magazine, Hooding, Sticker, TV show, Website, public information campaign etc.

iii. People's Organization Development:

- Development and functioning of **Shushamaj (Civil Society Organization)**
- Development and functioning of **Shadhikar(Women Network)**
- Development and functioning of **Shuvoshakti(Youth Organization)**
- Development and functioning of **Shuvoshakal(Poor Peoples' Organization)**
- Development and functioning of **Saw-Unnayan Forum (Rural Community Organization)**
- Development and functioning of **Shushamoy (Farmer's organization)**
- Development and functioning of **Shudin (Climate Change & Adaptation Organization)**
- Ensure Peoples Participation in Local Government **through CIG (Citizen in Governance)**

Support Programs (Cells):

1. HRM Cell: Human Resources management, Development and Appraisal.
2. Training Cell: Provide human & skill development training, technological support, consultancy etc
3. Monitoring & Evaluation Cell: Conduct monitoring & evaluation at different level like – Vision, Mission, Programs & Projects.
4. Finance Cell: Overall finance and accounts management at both central and field level
5. Internal Audit Cell: Conduct internal audit and assists external audit
6. Public Relation & Fund Raising Cell: Communication with donors & others stakeholders and undertake different initiatives for fund raising
7. Disaster Management Cell: Community Risk Assessment, disaster preparedness, response, relief & rehabilitation

8. **Research and Advocacy Cell:** This Cell is conducting different field research, studies, piloting, documentation & dissemination of best practices, conduct various assessment like Community Risk Assessment (CRA), Community Risk & Vulnerability Assessment (CRVA), policy review and issue based advocacy.
9. **Gender Cell:** This Cell is ensuring equitable benefits to all staff and beneficiaries particularly women through operationalize the gender and equality policy.
10. **Admin, Logistics and procurement Cell:** This cell cover all the process of admin & procurement, logistic support, maintain registers & documentation, assets management, land acquisition, extend support to all etc.

Contact

Mostafa Nuruzzaman, Chief Executive, *Shushilan*
Cell Phone: +88-01720510199 & +88-01552112778

Address

Head Office:

Shushilan, House # 155, Jalil Sharoni, Residential cum Commercial Area, Rayermohol part, Boyra, Khulna 9000, Bangladesh. Tel: +88 041 2851291

Dhaka Liaison Office:

Shushilan, House # 614, Road # 12, Baitul Aman Housing Society, Adabor, Dhaka - 1207, Bangladesh. Tel: +88 02 58155170 & +88 02 9120788.

Email: shushilan@shushilan.org & ce@shushilan.org

Website: www.shushilan.org